

TECHNICAL BULLETIN

TB NO.1002
REV. 1

**SUBJECT: Camshaft Lobe Wear
Superior 510 & 825 (Inline-Vee) Series Engines**

**PROBLEM: Premature Camshaft Lobe Wear Caused by
Inadequate Pin to Roller Lubrication**

Camshaft lobe wear problems have existed for several years with almost everyone blaming the lobe hardness, depth of lobe hardening or lobe-shaft assembly procedures. As a result of extensive testing (see attached Technical Bulletin No.1002) we are pleased to introduce two new **PowerParts**[®] assemblies which are designed to properly lubricate the roller to pin area plus incorporating state to the art materials.

I. SOLUTION:

The attached drawing sections with the following outlines the solution to the above problem and the advantages of the new **PowerParts**[®] cam follower assemblies over other available standard designs.

<u>ITEM</u>	<u>DESCRIPTION</u>	<u>ADVANTAGE</u>
1	Roller	New material through hardened, widest possible roller contact surface and lubrited.
2	Pin	New material through hardened, grooved and drilled for proper lubrication to roller contact surface.
3	Guide	Three holes for pin to roller lubrication, knife top edge for increased side lubrication and no special requirements on installation orientation.

TECHNICAL SERVICE DEPT.
300 West First
Alice, Texas 78332 USA
361.668.8311
800.723.6396
fax 361.668.3906
www.endyn.com

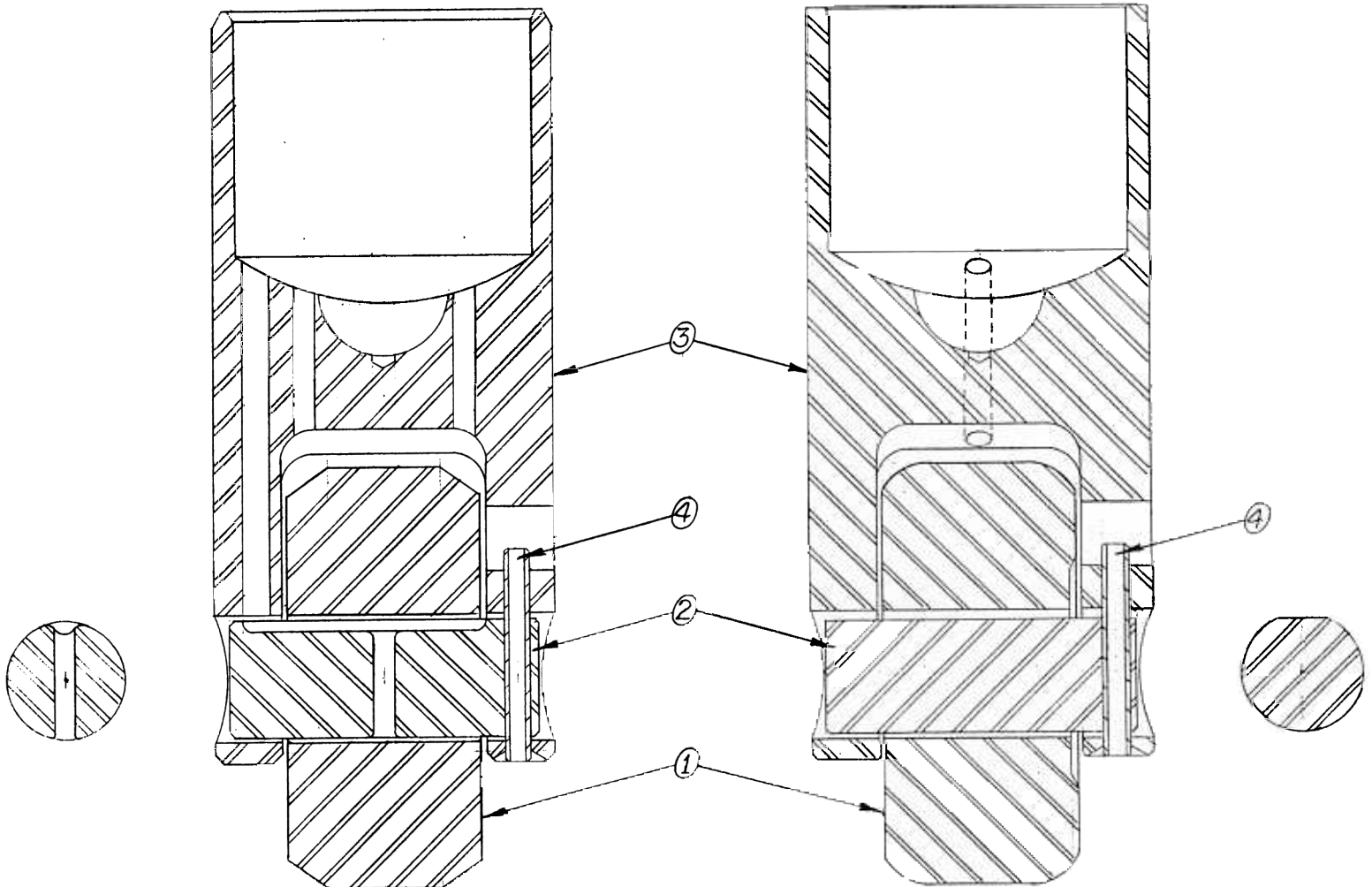
II. INTERCHANGEABILITY:

Dimensionally all the components of the new **PowerParts**[®] assemblies are interchangeable with the OEM assemblies. Based on the fact that **EnDyn** has an improved design, we, however, do not recommend using any of the components of the **PowerParts**[®] assemblies in the OEM assemblies, nor using any OEM parts in our assemblies. For desired results worn guides, rollers and/or pins should be replaced with the new **PowerParts**[®] complete assembly.

For further information, concerning Superior cam follower guide assemblies, please contact **EnDyn's** Technical Service Department direct or your local authorized **PowerParts**[®] Distributor.

5-19-98

CAM FOLLOWER ASSEMBLY
- FOR MODEL 825 SUPERIOR ENGINES -

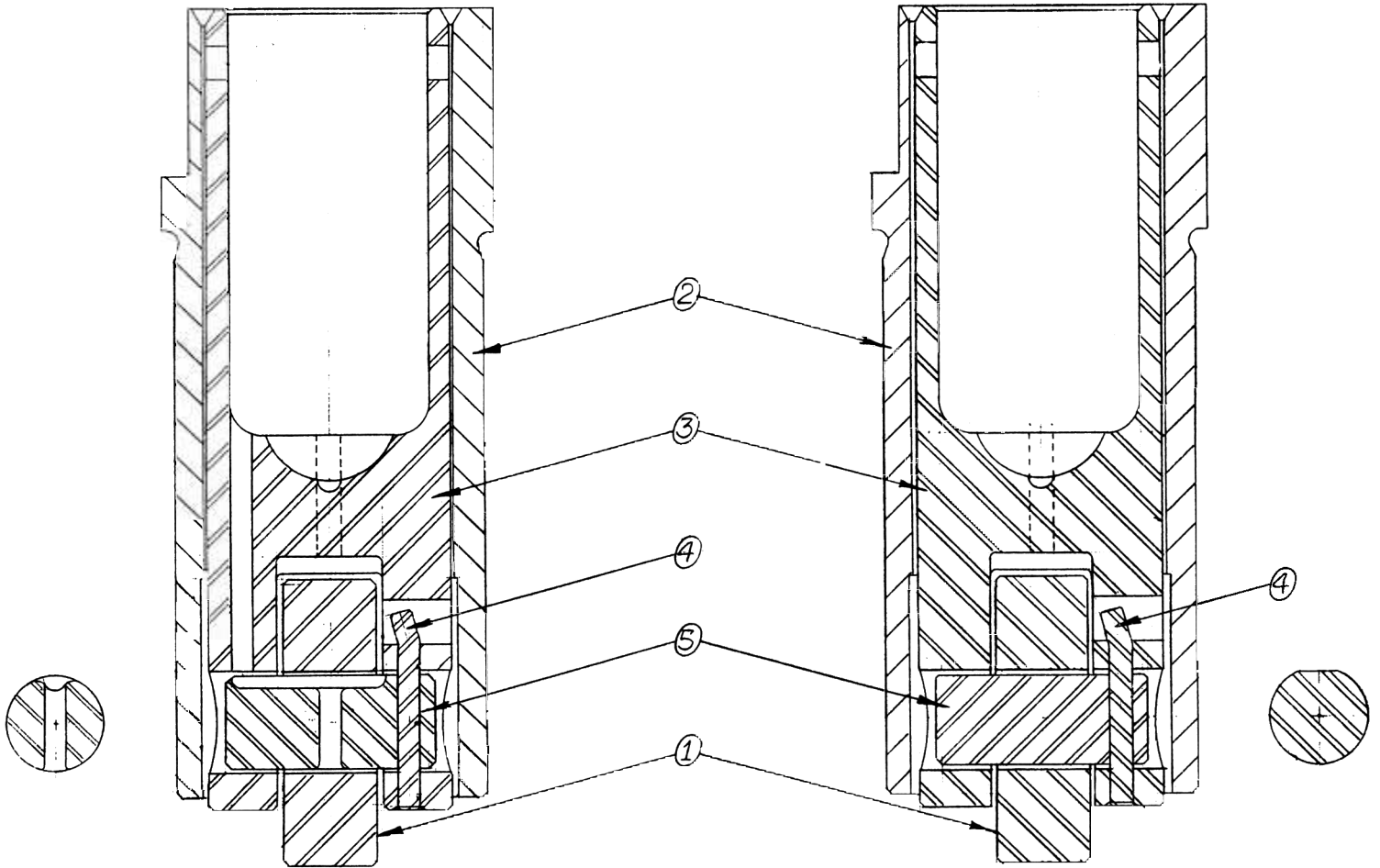


P-026-889-X
POWERPARTS®

YA-026-889
O.E.M.

<u>ITEM NO.</u>	<u>ENDYN PART NO.</u>	<u>OEM PART NO.</u>
1	P-026-888-X	B-001-071
2	P-019-528-X-1	A-019-528
3	P-014-842-X	B-014-842
4	P-115-305	A-115-305

CAM FOLLOWER ASSEMBLY
—FOR MODEL 510 SUPERIOR ENGINES—



F-YG-668-D-X
POWERPARTS®

YG-668-D
O.E.M.

<u>ITEM NO.</u>	<u>ENDYN PART NO.</u>	<u>O.E.M. PART NO.</u>
1	P-C-2033-B	C-2033-B
2	P-C-2034-A-1	C-2034-A-1
3	P-OC-2036-B-X	OC-2036-B
4	P-C-2342	C-2342
5	P-C-2385-X	C-2385